

H TIMING PULLEYS

0.500" Trapezoidal Pitch

For 1.5" Wide Belts

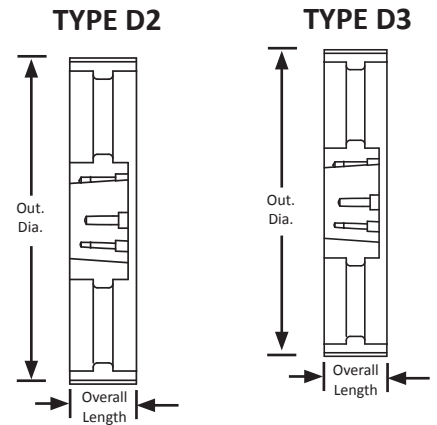
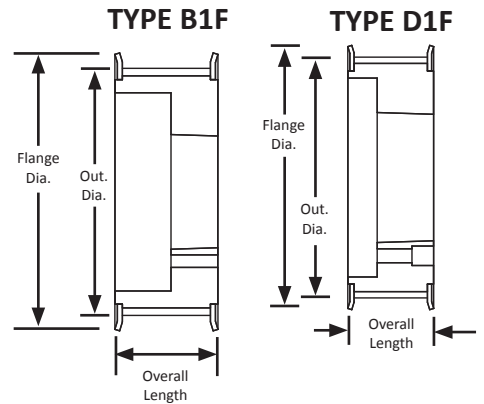
Iron

Black Oxide Plating

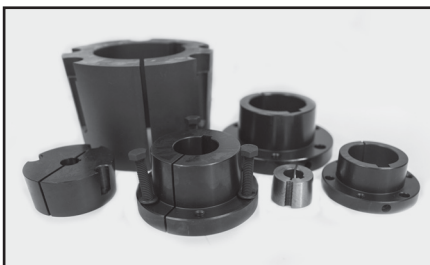
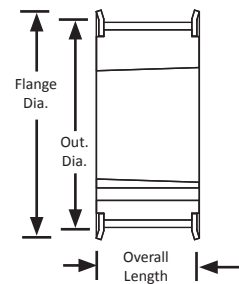
QD® Style



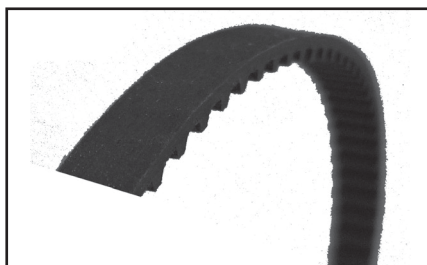
Part Number	No. of Teeth	Type	Pitch Dia. (in)	Out. Dia. (in)	Flange Dia. (in)	Bushing	Face Width (in)	Overall Length (in)
QD14H150	14	E1F	2.228	2.174	2.461	JA	1.812	1.812
QD16H150	16	E1F	2.546	2.492	2.780	JA	1.812	1.812
QD18H150	18	E1F	2.865	2.811	3.100	SH	1.812	1.812
QD20H150	20	E1F	3.183	3.129	3.256	SH	1.812	1.812
QD22H150	22	E1F	3.501	3.447	3.735	SD	1.812	1.812
QD24H150	24	E1F	3.820	3.766	4.050	SD	1.812	1.812
QD26H150	26	D1F	4.138	4.084	4.369	SD	1.812	1.812
QD28H150	28	D1F	4.456	4.402	4.687	SD	1.812	1.812
QD30H150	30	B1F	4.775	4.721	5.000	SD	1.812	1.812
QD32H150	32	B1F	5.093	5.039	5.320	SK	1.812	1.812
QD36H150	36	B1F	5.730	5.676	5.959	SK	1.812	1.812
QD40H150	40	B1F	6.366	6.312	6.600	SK	1.812	1.812
QD44H150	44	B1F	7.003	6.949	7.231	SK	1.812	1.812
QD48H150	48	B1F	7.639	7.585	7.867	SK	1.812	1.812
QD60H150	60	D3	9.549	9.495	-	SF	1.812	1.812
QD72H150	72	D2	11.459	11.405	-	SF	1.812	1.812
QD84H150	84	D3	13.369	13.315	-	SF	1.812	1.812
QD96H150	96	D3	15.279	15.225	-	SF	1.812	1.812
QD120H150	120	D3	19.099	19.045	-	SF	1.812	1.812
QD156H150	156	D3	24.828	24.774	-	SF	1.812	1.812



TYPE E1F



For matching QD® bushings, see page 372.



For matching H pitch belts, see page 199.